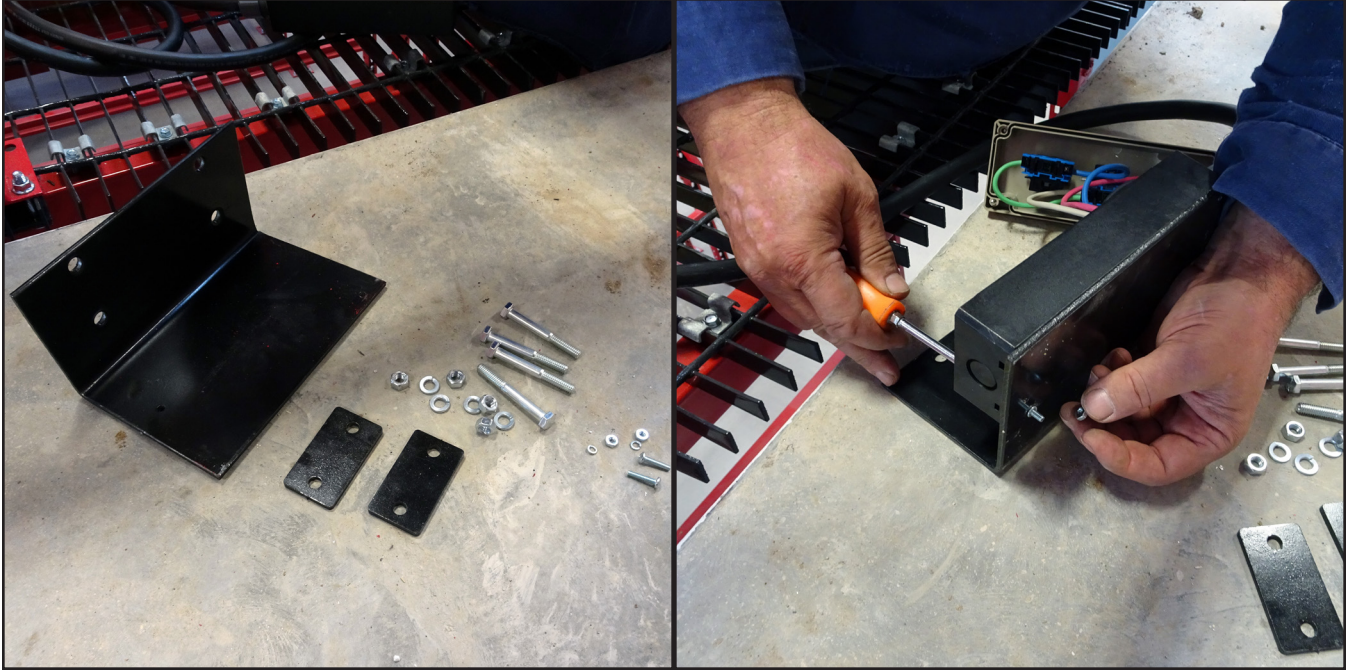


# E-Stop Remote Control Installation Instructions



- Recommended tools: Phillips screwdriver, 1/2" wrench or nut driver , 11/32" wrench or nut driver
- Mounting kit contents: (1) 4" x 5" bracket, (2) back plates, (4) 5/16" x 2-1/2" bolts, (4) 5/16" lock washers, (4) 5/16" nuts, (2) #8 machine screws, (2) #8 lock washers, (2) #8 nuts

- Use the #8 hardware to secure the remote to the bracket (remote cover must be removed)



- Mount the remote control unit on the **outside** of the tire window using the 1/2" hardware
- Route the cord along the tire window frame and secure it using the wire ties provided